

Safe at School Guidelines for Caverna High/Middle School



**In person classes
2020-21**



Welcome Back Colonels!

(Starting Oct. 12th)

The following building plan has been developed for the health & safety of our students and staff as we begin the new school year. It outlines the expectations for proper & safe re-entry of in-person classes. This plan could change at any time with new recommendations by the CDC, KDE, or governor's office.



GENERAL SAFETY GUIDELINES AT SCHOOL

- *ALL students and staff are **required** to wear a mask (unless there is a medical issue) when they enter the building and throughout the school day **except to eat breakfast and/or lunch**
- *All students will have **assigned seats** in all classes and at breakfast/lunch
- *Students and staff will practice **social distancing** (6 feet apart) rule as much as possible while at school
- *Anyone with a temperature of **100.4 degrees** or above will not be allowed to enter the school
- *When students/staff enter the school and/or classroom, they will **wash or sanitize** their hands
- *Students will **NOT** use lockers this year, but **will be allowed** to carry backpacks
- *Time between classes/activities will be allowed for **proper cleaning & disinfection** of high-touch areas/surfaces
- *All students must walk single file on the right side of the hallways

GENERAL SAFETY GUIDELINES AT SCHOOL

STUDENTS OR STAFF SHOULD STAY HOME IF THEY FEEL SICK OR EXPERIENCE ANY OF THE FOLLOWING:

- Temperature of 100.4 or greater
- Moderate to excessive Coughing/sneezing
- Vomiting/Diarrhea
- New Rash
- Exposure to a COVID-19 case/person
- Tests positive to COVID-19



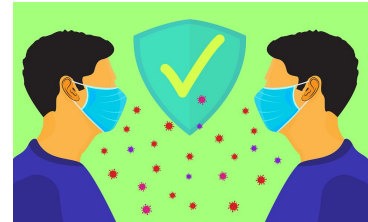
STUDENTS WILL ALSO BE ISOLATED WITH SUPERVISION AND SENT HOME IF THEY EXPERIENCE ANY OF THE SYMPTOMS DURING THE SCHOOL DAY FOR THE SAFETY OF EVERYONE

→ Students will have assigned seating in all classes at six (6) feet apart or as much as possible and facing the same direction

→ Students will have assigned seating at breakfast & lunch

FACE COVERINGS & MASKS

- Students and staff are expected to **provide their own face covering or mask** on a daily basis; masks will be provided to students who do not bring their own
- Students and staff may be exempt from wearing a mask by providing a medical waiver or doctor's statement
- All face coverings and/or masks must be school appropriate and adhere to dress code
- Masks **MUST** be worn properly during the entire school except for breakfast/lunch
- Students who refuse to adhere to wearing a face covering/mask at the appropriate times or social distance will be sent home and will be registered for the virtual option
- All face coverings/masks should:
 - *Cover both nose & mouth
 - *Fit snugly and secured with ties or ear loops, but comfortable against the side of the face
 - *Allow for breathing without restriction
 - *Be able to be laundered & machine dried without damage or change in shape



MORNING PROCEDURES

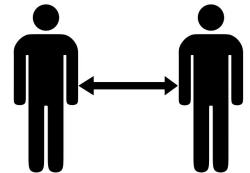
- Doors will open at **7:45 am** at CHS/CMS
- Temperature checks will be conducted for all car riders and student drivers/passengers before entering the school
- All **bus riders will enter through the FRONT doors** and report directly to their 1st period class, unless getting grab & go breakfast.
- All **car riders must wait inside their vehicle** until temperature check is completed
- All **student drivers/passengers will enter through the FRONT doors** and report directly to their 1st period class, unless getting grab & go breakfast.
- Parents shall not escort students into the school building
- Practice **social distancing** as much as possible
- All students **must walk single file on the right side of the hall** as they enter



HALLWAY PROCEDURES

- Students & staff shall walk on the **right side of the hallway and transition up/down stairs**
- Students & staff shall **walk single file** in the hallways
- Students & staff shall **practice social distancing** as much as possible in the hallways
- Students & staff shall **not walk in groups or huddle up** in the hallways for any reason

- Water fountains will not be allowed to use; students may bring their own water bottles and refill their bottles at the bottle filling stations
- No lockers will be assigned or used this year; backpacks will be permitted
- Read and follow all signage concerning safety guidelines
- Students & staff shall walk only single file up/down stairs on the right side



BREAKFAST & LUNCH

- **Students will have assigned seats at breakfast and lunch for contact tracing purposes**
- **Face coverings or masks are required in transition to and from breakfast/lunch**

BREAKFAST

CMS breakfast will be grab & go as they enter CMS hallway & report to 1st period

CHS breakfast will do grab & go in the cafeteria & report to 1st period

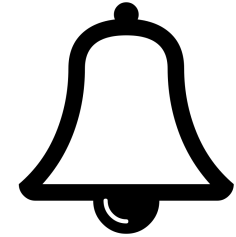
LUNCH

CMS/CHS lunch will be in the cafeteria and other locations in order to social distance



DISMISSAL

Dismissal will be as followed: (by announcements)



⦿ **Car riders & student drivers will be released first each day**

*All car riders will exit through the gym doors

*Student pickups will be in the designated pick up line; no parking in the lot

*Student drivers will exit through the elevator stairwell door

⦿ **Bus riders will be released 1-2 buses at a time as they arrive on campus**

↳ Students will need to **go directly to their assigned exit** as they are dismissed

↳ Face coverings or masks **are required** during dismissal and on the bus

↳ Students will walk on the right side of the hallway during dismissal

VISITORS

- **Visitors are welcome, but will be limited as much as possible**
- **CHS**-All parents/guardians/visitors must check in at the **visitor window** and wait in the visitor area if signing out their child
- **CMS**-All parents/guardians/visitors must check in at the middle school office
- Temperature checks and contact tracing will be required for anyone entering the building other than just picking up a student
- Temp checks and contact tracing is required for visitors
- Face coverings or masks are required to enter the building



Caverna School Calendar 2020-21

Caverna Schools 2020-2021

2 Week Delayed Start

July 2020							August 2020							September 2020							October 2020												
SUN	MON	TUES	WED	THUR	FRI	SAT	SUN	MON	TUES	WED	THUR	FRI	SAT	SUN	MON	TUES	WED	THUR	FRI	SAT	SUN	MON	TUES	WED	THUR	FRI	SAT						
			1	2	3	4	5	6	7	8	9	10	11	12	13	14	15	16	17	18	19	20	21	22	23	24	25	26	27	28	29	30	31
5	6	7	8	9	10	11	12	13	14	15	16	17	18	19	20	21	22	23	24	25	26	27	28	29	30	31	1	2	3	4	5	6	7
12	13	14	15	16	17	18	19	20	21	22	23	24	25	26	27	28	29	30	31	1	2	3	4	5	6	7	8	9	10	11	12	13	14
19	20	21	22	23	24	25	26	27	28	29	30	31	1	2	3	4	5	6	7	8	9	10	11	12	13	14	15	16	17	18	19	20	21
26	27	28	29	30	31																												
							30	31																									
November 2020							December 2020							January 2021							February 2021												
SUN	MON	TUES	WED	THUR	FRI	SAT	SUN	MON	TUES	WED	THUR	FRI	SAT	SUN	MON	TUES	WED	THUR	FRI	SAT	SUN	MON	TUES	WED	THUR	FRI	SAT						
1	2	3	4	5	6	7	8	9	10	11	12	13	14	15	16	17	18	19	20	21	22	23	24	25	26	27	28	29	30	31	1	2	3
5	6	7	8	9	10	11	12	13	14	15	16	17	18	19	20	21	22	23	24	25	26	27	28	29	30	31	1	2	3	4	5	6	7
15	16	17	18	19	20	21	22	23	24	25	26	27	28	29	30	31	1	2	3	4	5	6	7	8	9	10	11	12	13	14	15	16	17
22	23	24	25	26	27	28	29	30	31	1	2	3	4	5	6	7	8	9	10	11	12	13	14	15	16	17	18	19	20	21	22	23	24
29	30																																
March 2021							April 2021							May 2021							June 2021												
SUN	MON	TUES	WED	THUR	FRI	SAT	SUN	MON	TUES	WED	THUR	FRI	SAT	SUN	MON	TUES	WED	THUR	FRI	SAT	SUN	MON	TUES	WED	THUR	FRI	SAT						
	1	2	3	4	5	6	7	8	9	10	11	12	13	14	15	16	17	18	19	20	21	22	23	24	25	26	27	28	29	30	31	1	
7	8	9	10	11	12	13	14	15	16	17	18	19	20	21	22	23	24	25	26	27	28	29	30	31	1	2	3	4	5	6	7	8	
14	15	16	17	18	19	20	21	22	23	24	25	26	27	28	29	30	31	1	2	3	4	5	6	7	8	9	10	11	12	13	14	15	16
21	22	23	24	25	26	27	28	29	30	31	1	2	3	4	5	6	7	8	9	10	11	12	13	14	15	16	17	18	19	20	21	22	23
28	29	30	31																														

- No early release Fridays this year.

- No school for students on the following dates:

Sept. 4

Oct. 23

Nov. 13

Dec. 11

Jan. 15

Feb. 12

Mar. 19

- Teachers ONLY will report on these dates

- Deep cleaning will be conducted on these dates

185 Day Calendar
Date

Caverna Ind Schools
Events

185 Day Calendar
Date

Caverna Ind Schools
Events

CONTRACT DAY